



Tactologic

Tactologic Ltd.
info@tactologic.com
phone:+ 36 1 886 4785
fax:+ 36 1 886 4724
H-1083 Budapest,
Práter utca 50/a, Hungary

Tactologic Ltd.

Tactologic Ltd. is the very first manufacturer of three-axial tactile-sensor arrays worldwide.

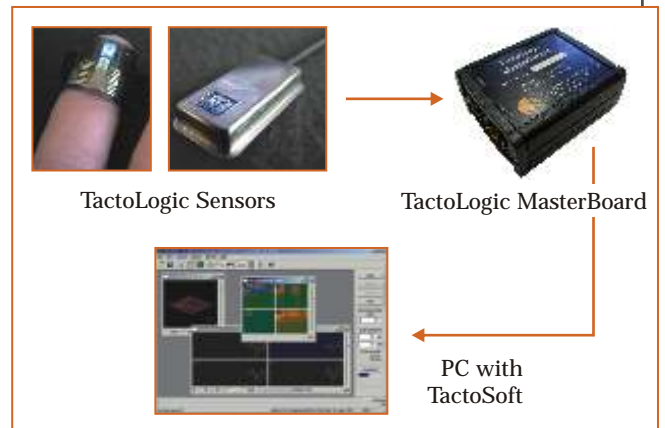
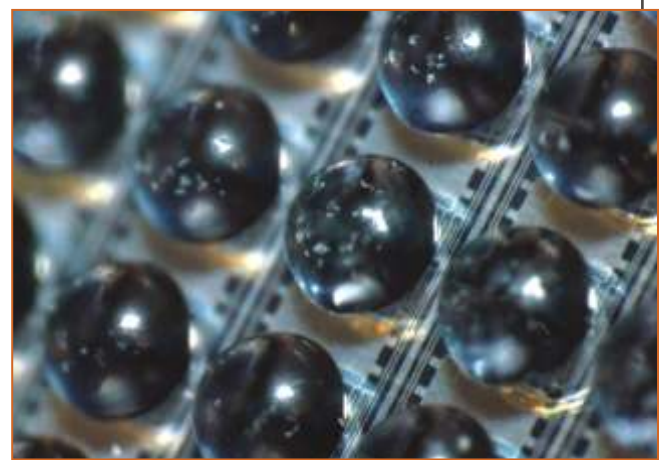
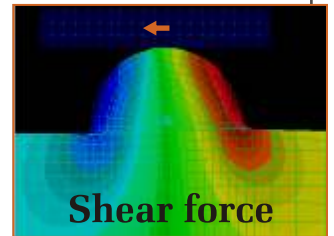
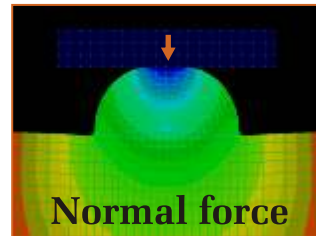
Three Components

Compared to other pressure-mapping systems, our devices measure not only one, but all three components of the load profile over the sensor array, with up to 64 sensor elements.

Pushing the Limits

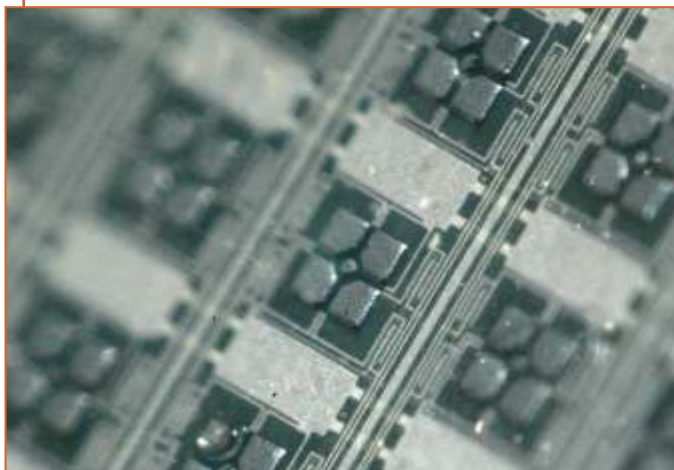
By measuring both normal and shear-force profiles we obtain an extended, multi-channel tactile image of objects and textures, and push the limits of artificial dexterous manipulation beyond slip prevention, friction estimation or 3D-texture mapping.

www.tactologic.com



Applications

Our devices can be used for robotic, virtual-reality, medical, industrial, and scientific purposes for a wide range of applications.



TactoPad 2x2

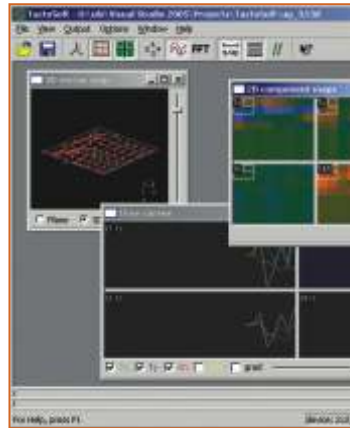
TactoFlex 2x2

Our Products

TactoPad 2x2 and TactoFlex 2x2 are our smallest, four-element three-axial force sensor arrays with different application potentials.

Common Features

- Spatially distributed, dynamic three-axial force sensing
- Highly linear characteristics
- High sensitivity
- Easy connection to PC through read-out electronics
- Easy-to-use software for acquiring, visualizing and storing data



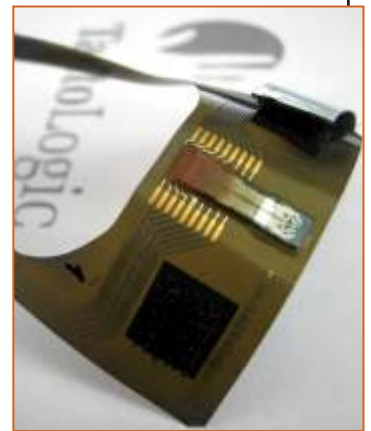
TactoSoft



TactoPad 2x2



TactoFlex 2x2



TactoFlex 2x2

	TactoPad 2x2	TactoFlex 2x2
Product Highlights	<ul style="list-style-type: none"> - portable, compact size - robust design 	<ul style="list-style-type: none"> - flexible layout - designed for finger-mounted applications
Possible Applications	<ul style="list-style-type: none"> - robotic grasping tasks - enhanced object handling - pre-slip detection - friction estimation 	<ul style="list-style-type: none"> - tele-surgery applications - physical diagnostics - virtual-reality - texture classification

Specifications

Technology	piezoresistive
Number of Three-axial Taxels	4 (2x2)
Size of Active Area	3x3 mm
Sensitivity and Load Range	8 or 16 bit output of 0-2.5 N normal and ± 1 N shear load (comparable to the range of light dexterous manipulation)
Max. Scan Rate	100 FPS
Minimal PC Requirements	Windows XP, 800 Mhz processor, 40 MB hard disk space, 256 MB memory